



2023 ELIMU SCHOLARSHIP PROGRAM SCHOLARSHIP ONLINE APPLICATION PROCESS

INTRODUCTION

The Elimu Scholarship Programme targets needy (orphan or vulnerable) Kenya Certificate of Primary Education (KCPE) candidates. Beneficiaries are identified by assessing their performance in the KCPE Examination that is administered nationally.

HOW TO APPLY ONLINE

The applicant should create a new account through the portal <https://egfdmis.equitybank.co.ke/> and fill in the 2023 application form for consideration.

1. Only 2022 KCPE candidates are legible to apply for the 2023 Elimu Scholarship Programme.
2. The information provided in the online form is intended to help the Community Scholarship Advisory Board (CSAC) administering Elimu Scholarships to understand the applicant's academic and financial position for the purpose of assessment for scholarship award.
3. All fields with asterisks (*) are mandatory fields and must be filled accordingly.
4. The online application form must be filled accurately, honestly and in full. Applications without relevant documents will not be considered.
5. To complete the online application process, you will be required to have soft/scanned copies of the following documents:
 - KCPE Results Slip (official KNEC slip or signed & stamped paper from the school)
 - Copy of Death Certificate (if father/mother is/are deceased)
 - Evidence of financial support (if you have received support in the past)
 - Evidence of special needs (if you have indicated that you are a Special Needs learner)
 - Copy of Pay Slip/Bank Statement (if parent(s)/guardian(s) is employed/business person)
 - Signed Declaration by Applicant and Parent/Guardian
 - Copy of Birth Certificate or a registration number in case of refugees
 - Filled application and recommendation form by Head Teacher, Provincial Administration, Religious Leader or any other leader

NB: The completion and submission of this form is not a guarantee for sponsorship. Only shortlisted candidates will be invited for interviews. Any false statements, omissions or forged documents will lead to automatic disqualification.

ELIMU PROGRAM SELECTION CRITERIA

The Elimu Scholarships will be awarded to needy and vulnerable learners who attained 280 marks and above in the 2022 KCPE Examination in all 47 Counties (including informal settlements in fifteen (15) urban centres). For affirmative action, candidates who are Orphans and those with special needs and disabilities who attained below 280 marks may be considered. Refugee girls and boys from camp-based schools who attained a minimum of 240 and 250 marks respectively may be considered. Only candidates who sat the 2022 KCPE examinations from public schools and those from camp based primary schools in Kakuma, Kalobeyei and Daadab are eligible. Only candidates who would otherwise not afford to join Form One without financial support and are academically promising will be considered for the scholarship. These include:

- Candidates with special needs and disabilities (Physical, Hearing and Visual Impairments, Autism, Albinism, Learning Disabilities and Others); or
- Orphans and vulnerable children; or
- Candidates from informal settlements in 15 urban centres;
- Candidates from the 49 camp-based schools or

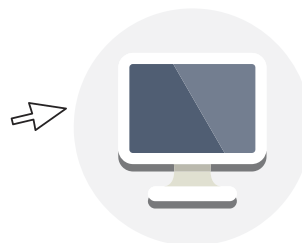
Candidates:

- Whose parents/guardians are living with disabilities that have compromised their ability to meet the financial obligations of their children.
- Whose families are affected by HIV/AIDS and other chronic illnesses with debilitating effects that could render parents and guardians destitute and unable to fend for their families.
- Whose families are affected by extreme poverty rendering them unable to educate their children.
- Who have suffered from neglect, abuse and have no support to continue with their education.

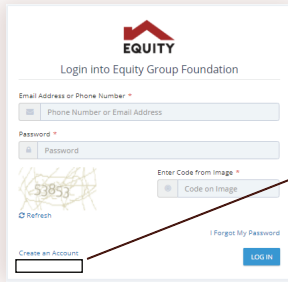
1.

Getting Started

Access the login page using <https://egfdmis.equitybank.co.ke/>

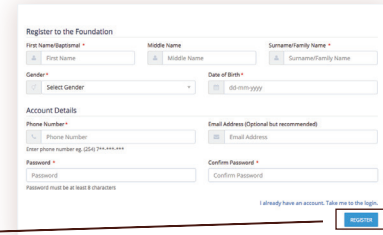


2. Login Page



Click on [Create an Account](#). You will be redirected to a new page where you will register into the Foundation. Fill in all the fields provided.

Click on the [Register](#) button to submit your details.

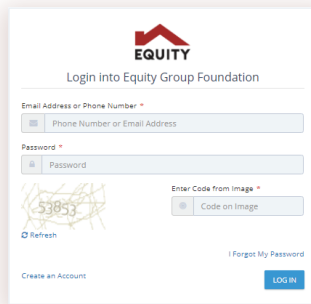


NOTE:

- All form fields with an asterisk(*) require to be filled before clicking on the 'Register' button
- Password must be at least 8 characters with an uppercase letter

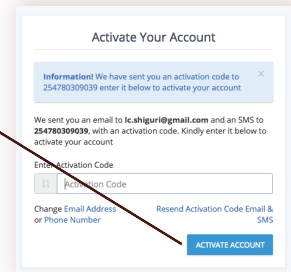
3. Activate Account

Once you fill the registration form and submit it, an [Activation Code](#) will be sent to your phone via SMS and email [if provided]. Enter the code and click the [Activate Account](#) button to activate your account.



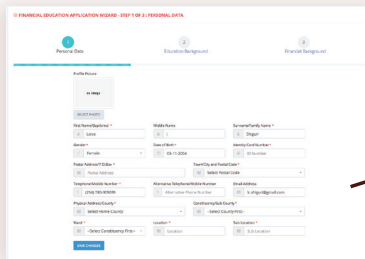
If the code has not been sent yet to your account, click 'Activate Account' for it to resend the [Activation Code](#) email and SMS.

Enter your Phone Number, then enter your Password and click the [Login](#) button. See below.

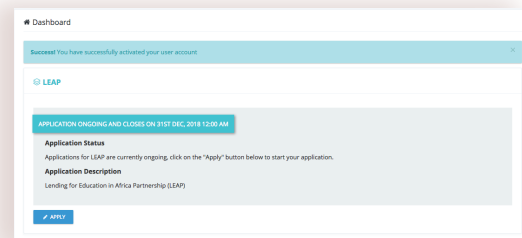


4. Scholarship Application

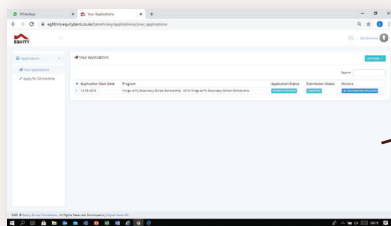
Once you log in successfully, you will be redirected to a new page where you will see Open Scholarship for application. Read the scholarship description and click [Apply](#). Fill in all the fields provided in every step, then click on the [Save Changes](#) button to submit your details in every step.



The form is a step by step process which is divided into five (5) segments.



When the beneficiary clicks the 'Save Changes' button, a review page is displayed where all the details filled in the step by step process form are displayed.



The final step is for you to click on the [Submit Application](#) (button) for review or edit any part of the form.

Once you review and submit your application, you will be directed back to the application dashboard which displays the Application Status. The beneficiary can view more details of their application by clicking on the [View Application](#) button.

Contact Information

If you have any questions about this process or any Elimu Scholarship Programme, please contact:
 Tel: +254 763 000 000, elimu@equitygroupfoundation.com | elimu@education.go.ke
 Equity Center, 8th Floor, Hospital Road, Upper Hill | P.O. Box 75104 – 00200 Nairobi, Kenya