




RECORD OF BID CLARIFICATION / AMENDMENT				
Project		"Promotion of Youth Employment and Vocational Training in Kenya" (BMZ Reference Numbers: 2016 67 211 and 2016 65 298)		
Procurement name		Supply, Delivery and Commissioning of Equipment for Technical Training Institutes in Kenya: Technical Equipment for Automotive Mechatronics and Body Building		
Procurement ref. no.		ICB-08/MOE-VTT/TVET/KfW 2016 67 211/004/2023-2024		
Clarification No.		1		
Date of Clarification		27.12.2023		
S/N	Question / Clarification Request	Date of Request	Purchaser's Response	Clarification / Amendment
1	The items in these tender are numerous and in some cases technically sophisticated. It will take time to prepare adequate bids. ... We therefore kindly ask you to extend the deadline for bid submission by at least 14 days.	28.11.2023	An extension to the original bid submission deadline is not possible for this tender.	Clarification
2	In reference to the tender "ICB-08/MOE-VTT/TVET/KfW 2016 67 211/004/2023-2024", the tender comprises more than one Lot. Are we required to submit separate document for each Lot?	30.11.2023	The bidder's question is not clear, because "separate document" is not specific. However, the Purchaser advises bidders to refer to: - <b>Section I. Instructions to Bidders, ITB 11. Documents Comprising the Bid.</b> The Purchaser expects companies to submit 1 (one) Bid: if applying for more than 1 Lot, then within the Bid the Price Schedules (ITB 14.2) and Technical Specifications (Section VII, 3 Technical Specifications) are required for each Lot.	Clarification
3	... we would be glad if you could extend the deadline of the tender for some time.	05.12.2023	(Refer to clarification number 1)	Clarification
4	<b>Item No. N 1 / Item Name: Hexagonal workbench</b> <i>The specification refers to a power island with blank panels and no modules. Is that correct? If not, please review the specification and indicate / specify desired modules the power island should be equipped with.</i>	05.12.2023	Group workbench with 6 workstations / 2-part work surface, 20 mm thick beechwood multiplex, oiled on upper and lower, front long edges bevelled on both sides / height 200mm, width 800mm and depth 700mm, with a central locking system or with a dual locking system / workbench height 850mm / 4 Drawers bases are perforated with 3.2 mm holes, and inside drawer walls have pressed-in bars and slots at a 17 mm pitch / Constructed from a single	Clarification

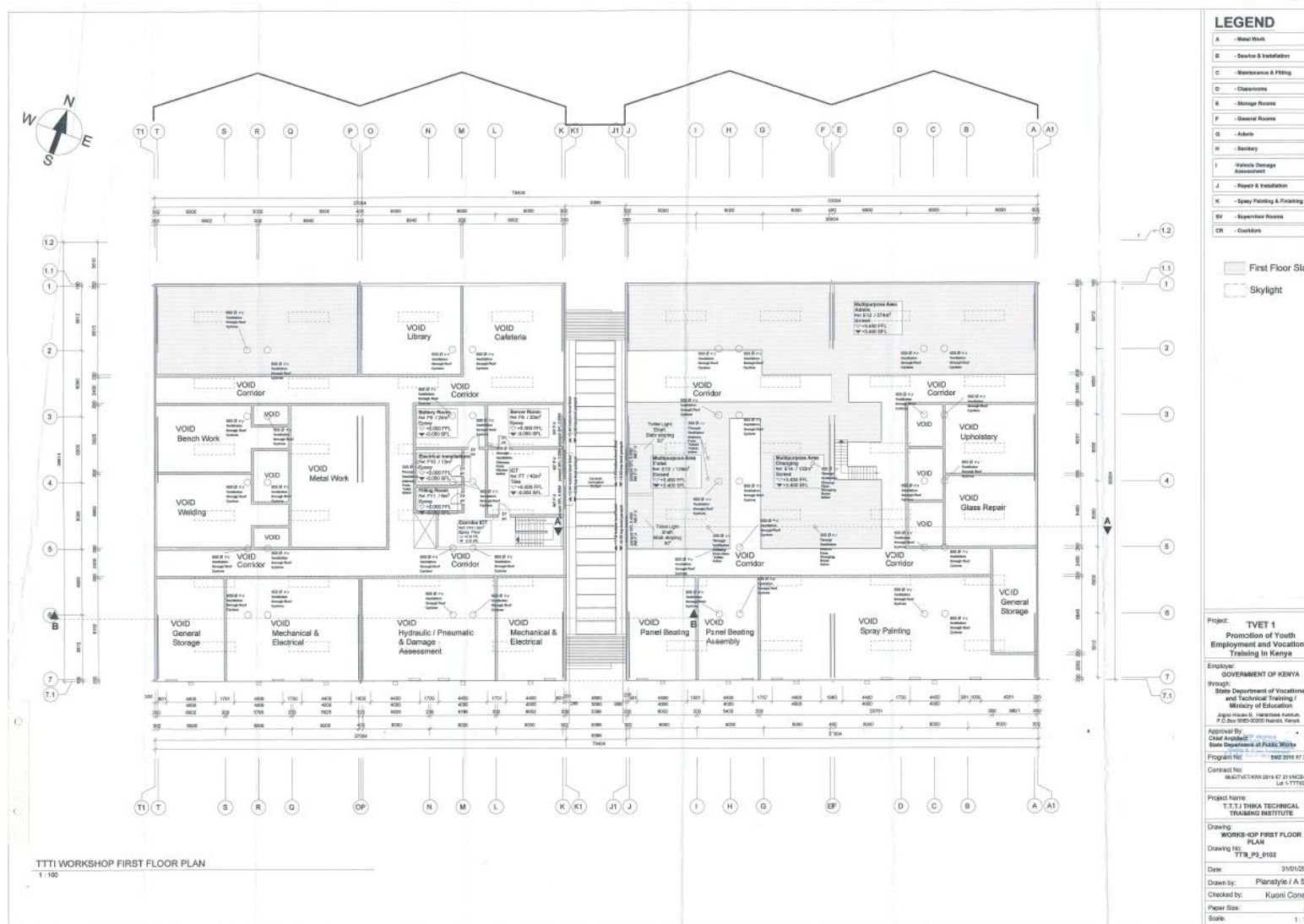
			<p>piece with the most up-to-date CNC technology, with a load capacity of 80 kg / Power housing, e.g. with plug single phase sockets</p> <p><b>Illustration (not restrictive):</b></p> 	
5	<p><b>Item No. N 305 / Item Name: Hydraulic floor jack for trucks</b></p> <p><i>It seems as if a part of the specification is missing. Kindly indicate relevant parameters such as capacity etc.</i></p>	05.12.2023	<p>Hydraulic Bottle Jack for ideal for automotive, truck, van, farm / Bottle jack allows adjusting the lifting height. The maximum lifting height is 18-1/2" (c. 47cm) / with a two-piece pump handle, it makes for easy use in tight spaces and compact storage / should be painted with red glossy anti-rust and corrosion-resistant paint, which can be used both indoors and outdoors / Lifting Capacity: 50-Ton / Minimum Clearance: 8" (c. 20cm).</p> <p><b>Illustration (not restrictive):</b></p>	Clarification

				
6	<p><b>Item No. N 466 / Item Name: Engine and Chassis Roller Dynamometer</b>  <i>We assume that both dynamometers are for 4WD testing, i.e. 2 roller sets are required, one for the front and one for the rear axle, please confirm.</i>  <i>Please provide examples of cars (e.g. brand, model) which will be tested, for example:</i>  <i>Ordinary on-road vehicles, 2WD and/or 4WD with common rating of approx. 100-200 horse power?</i>  <i>Tuned on-road vehicles, 2WD and/or 4WD with common rating of approx. 200-400 horse power?</i>  <i>High performance professional motor sport race cars or ordinary road vehicles of approx. 400-800 horse power?</i></p> <p><i>Does the building provide an integrated cooling fan or are we requested to quote a movable cooling fan?</i></p> <p><i>Is there a requirement for emissions measurements, lambda meter, oil temperature sensing, ... ? [Note: if not, these options can be added any time later]</i></p>	05.12.2023	<p>Both dynamometers are for 4WD testing, i.e. 2 roller sets are required, one for the front and one for the rear axle / Should be for Asian and European 4X4 models 2WD and 4WD with common rating of approx. 100-200 horse power / Tuned on-road vehicles, 2WD and/or 4WD with common rating of approx. 200-400 horse power/ High performance professional motor for ordinary road cars / movable cooling fan is required / extra service such as installation and training would be required / a manual should be attached in English.</p> <p><b>Illustration (not restrictive):</b></p> 	Clarification

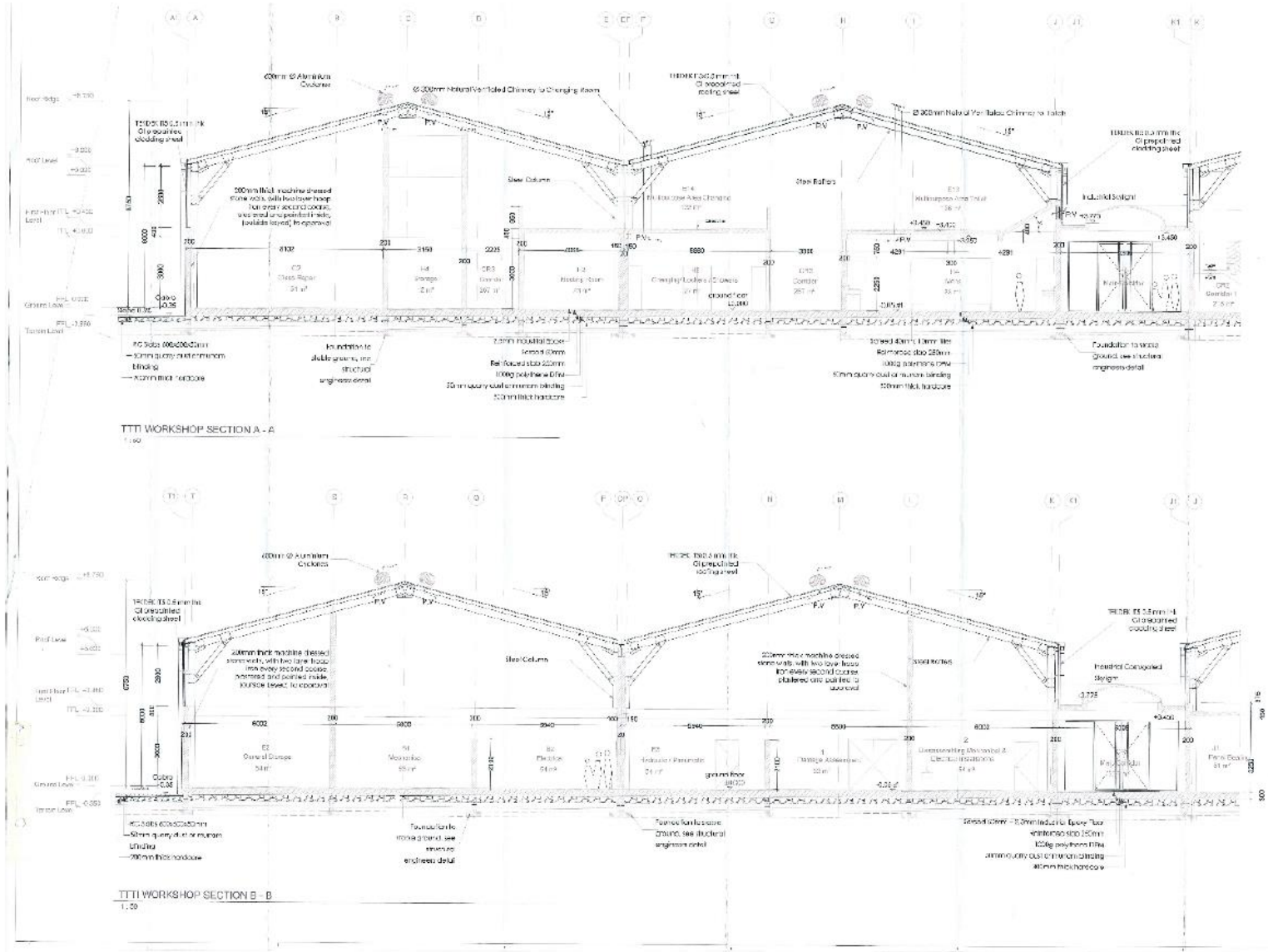
	<i>Please confirm that as per the tender documents no extra service such as installation, training and maintenance is required.</i>			
7	<p><b>Item No. T 270 / Item Name: SUB ITEM Ducting for preparation room</b> and <b>Item No. T 334 / Item Name: SUB ITEM Ducting for spray booth</b></p> <p><i>For the exhaust air ducts, we would still need information on how high the chimneys should be from the floor and of course it would help if we had drawings/photos so that we know whether we need 45°/90° bends.</i></p> <p><i>For the supply air too, is it possible to take these directly on an outside wall, for example.</i></p>	05.12.2023	<p><b>General comment:</b> It is important to adhere to the overall measurements of the spray booth / preparation room as indicated in the specifications because the construction of the workshop has been commenced. Therefore, the provided sample of a spray booth / preparation room, or an equivalent product, should be considered in the potential bid.</p> <p>See workshop drawings and sample spray booth attached (or equivalent).</p> <p>Closed cabin with air intake duct (approximately 900 x 900mm) from the workshop. The air supply to the cabin could be from the top or side. The later would require a 90 degree bend. No possibility to connect to the outside wall (see sample attached, or equivalent).</p>	Clarification
8	Would it be possible to grant a prolongation of the bidding time for appr. 6 weeks as the bidding lots have a wide range.	08.12.2023	(Refer to clarification number 1)	Clarification
9	<i>(Purchaser's clarification)</i>	N/A	<p>As a clarification and aligned with the Supplier's general responsibilities: Bidders kindly note that for the purposes of inspection and testing, the Supplier needs to install all Electronic/Electric Equipment items. This requirement is in addition to the items specifically listed in Section VII. Schedule of Requirements &gt; 3. Technical Specifications &gt; Installation of items.</p>	Clarification
	- ends -			

# Additional Information to Clarification No.1, S/N 6

## a. Workshop Floor Layout



**b. Workshop Sections**



**c. Sample preparation booth (or equivalent)**

## - PREPARATION BAYS -

### PREPARATION BAYS APPLICATION

- Equipment dedicated to surface preparation before painting, in automotive bodyshop.

### DESCRIPTION

- Single or double multi-function cell (with or without hot air compensation), multifunctional active cells for job tasks on vehicles: stopping, small sheet metal repairs, putty filling, drying, sanding, degreasing, masking, etc..
- Configuration on civil engineering structure or metal base
- Single or double bays
- Structure complete with lighting and mobile dividing curtains
- Equipment at ground level or overhead
- Several options and variations are possible : hot air compensation with or without plenum / dry sanding operation with centralised dust extraction with satellites or terminals using different energies / lift table / suspended rail IR dryer / etc..

### ADVANTAGES

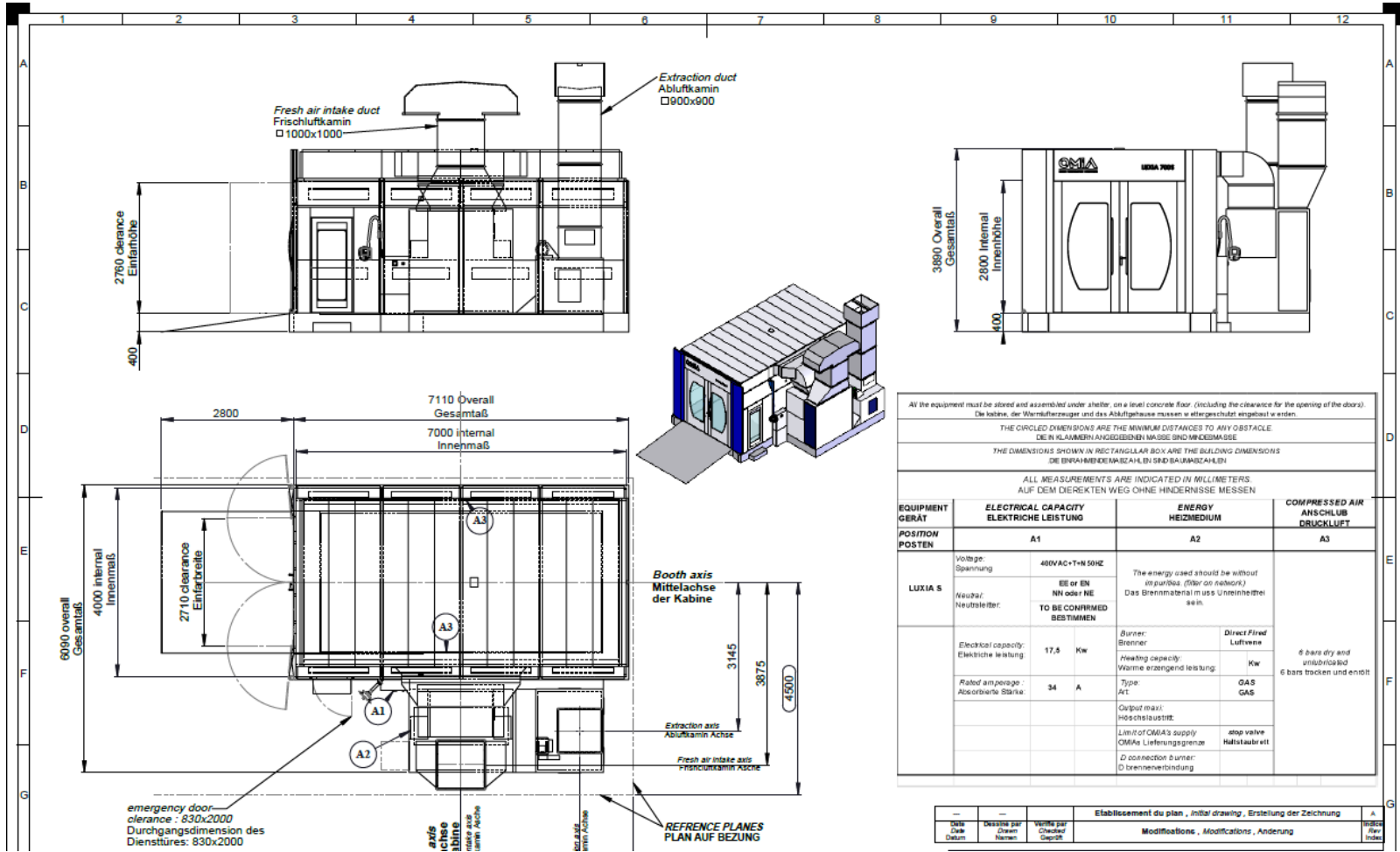
- Ergonomics
- Functional
- Productivity
- Healthiness

### COMPLIANCE

Machinery Directive 2006/42/EC depending on the equipment  
Directive on VOCs 2004/42/EC amending and replacing Directive 1999/13/EC of 11 March 1999 (reducing solvent emissions) applicable on 01 January 2007



d. Sample spray booth (or equivalent)



All the equipment must be stored and assembled under shelter, on a level concrete floor (including the clearance for the opening of the doors).  
Die Kabine, der Wärmluftzuger und das Abluftgehäuse müssen v. Wetter geschützt angebaud u. errichtet.

THE CIRCLED DIMENSIONS ARE THE MINIMUM DISTANCES TO ANY OBSTACLE  
DIE IN KLAMMERN ANGEZEIGTEN MASSE SIND MINDEMASSE

THE DIMENSIONS SHOWN IN RECTANGULAR BOX ARE THE BUILDING DIMENSIONS  
DIE IN RAHMENGEZEIGTEN MASSE SIND BAUMASSEN

ALL MEASUREMENTS ARE INDICATED IN MILLIMETERS  
AUF DEM DIREKTEN WEG OHNE HINDERNISSE MESSEN

EQUIPMENT GERÄT	ELECTRICAL CAPACITY ELEKTRISCHE LEISTUNG	ENERGY HEIZMEDIUM	COMPRESSED AIR ANSCHLUS DRUCKLUFT
POSITION POSTEN	A1	A2	A3
LUXIA S	Voltage: Spannung: 480VAC-T-N 50HZ Neutral: Neutralleiter: EE or EN NN oder NE TO BE CONFIRMED BESTIMMEN	The energy used should be without impurities. (filter on network) Das Brennstoffmaterial muss Unreinheitfrei sein.	
	Electrical capacity: Elektrische Leistung: 17,5 Kw	Burner: Brenner: Direct Fired Luftbrenn	6 bars dry and unlubricated 6 bars trocken und entölt
	Rated amperage: Absorbierbare Stärke: 34 A	Heating capacity: Wärme erzeugend Leistung: Kw Type: Art: GAS GAS	
		Output max: Hochleistungsstufe: Limit of CWMA's supply CWMA's Lieferungs-grenze: stop valve Haltschalter etc. D connection burner: D brennereinbindung	

Etablissement du plan , initial drawing , Erstellung der Zeichnung				A
Date Datum	Drawn Gezeichnet	Checked Geprüft	Revised Revisiert	Rev Index
Modifications , Modifications , Änderung				